



17.-19.06.2022

49th EKF JUNIOR, CADET & 14th U21

EUROPEAN CHAMPIONSHIPS

PRAGUE CZECH REPUBLIC



1st BULLETIN





Contents

1. INITIAL GREETINGS.....	4
1.1 The president of the European Karate Federation	
1.2 The chairman of the National Sports Agency	
1.3 President of the Czech Karate Federation	
2. CITY INFORMATION – PRAGUE.....	7
3. HOW TO GET TO THE CHAMPIONSHIPS.....	8
3.1 Flight	
3.2 Train and Bus	
4. ACCOMMODATION AND TRANSFERS.....	10
4.1 Hotel price list	
4.2 Official hotels	
4.3 Transfers	
5. WKF PROTOCOL MEASURES.....	19
5.1 COVID-19	
5.2 COVID-19 Local Restrictions	
6. REGISTRATIONS & SCHEDULES.....	21
6.1 Online registration for all athletes and coaches	
6.2 Press	
6.3 Onsite Registration and Accreditations	
6.4 Referee Registration	
6.5 Referee Course Schedule	
6.6 Event Schedule	
7. COMPETITION INFORMATION.....	27
7.1 Categories	
7.2 Age	
7.3 Competition Programme	
8. WKF APPROVED EQUIPMENT.....	30



9. VENUE.....	32
10. TICKETS.....	33
11. TRAINING FACILITIES.....	33
12. ADDITIONAL INFORMATION.....	34
12.1 Entry Requirements (Visas)	
12.2 Opening hours of shops	
12.3 Electricity	
12.4 Language	
12.5 Time	
12.6 Weather	
12.7 Currency	
12.8 Health and Services	
12.9 Insurance	
12.10 Transportation	
12.11 Drinking water	
12.12 Important phone numbers	
13. CATERING FORM.....	38
14. TERMS OF RESPONSIBILITY.....	39
15. CONTACT DETAILS.....	40
15.1 Czech Karate Federation	
15.2 Safe Karate	

1.1 President of the European Karate Federation



Antonio Espinós

Antonio Espinós

The Karate world in Europe is counting the days for the anticipated 49th edition of the EKF Cadet, Junior & 14th U21 Championships to be held in Prague (Czech Republic). It will be the perfect opportunity for all of us to witness the progress of the most promising athletes of the continent, as well as to confirm the development of the National Federations' grass-root programmes.

I encourage all the National Federations in Europe to strive to improve their development plans in order to benefit from our sport's core assets and to extend our values among the ever-growing number of young fans of Karate.

I am convinced that the 2022 EKF underage Championships will be a celebration of youth Karate, and as the event will surely be a success of participation and organisation, I want to thank the Czech Karate Federation and its President Jiri Bocek for their efforts to provide the best conditions for a memorable event.

Best of luck to all the participants and organisers and a big "Oss" to all of you Karate fans.

Antonio Espinós
President of the European Karate Federation

1.2 The chairman of the National Sports Agency

Filip Neusser



Filip Neusser

As the chairman of the National Sports Agency, I am very happy that sports events with an international dimension, such as the European Karate Championship, are taking place in the Czech Republic.

The last two years have been very demanding in terms of sports in general, including karate, and it is great that even thanks to such events, the sport is perhaps gradually returning to normal.

I believe that there will be more events such as the European Karate Championship in the Czech Republic and, thanks to the observance of hygienic measures, everything will go without problems.

The goal of the NSA is to achieve a harmonious sports environment, that will educate successful top athletes representing our country abroad, to which the Czech Karate Association contributes to a certain extent.

I wish all the competitors who will take part in the European Karate Championship good luck, and I wish to the Czech representatives a lot of precious metals.

Filip Neusser

The chairman of the National Sports Agency

1.3 President of the Czech Karate Federation

Jiří Boček



It is my great honour and pleasure to greet you on behalf of the Czech Karate Federation in the occasion of the 49th EKF Junior, Cadet & U21 Championships and to wish you a warm welcome to the Czech Republic and the beautiful capital Prague which is located in the heart of Europe.

Karate family has been facing difficult times during the pandemic. Many activities, including competitions, were cancelled and due to various restrictions normal training has not been easy either. For that reason, it is today more important than ever to organize international events such as this EKF Junior, Cadet & U21 Championships, which will take place in Prague.

We are incredibly proud of the trust shown to us by awarding us the organization of such a competition in this difficult time. I would like to take this opportunity to thank to the President of the European Karate Federation Mr. Antonio Espinós and the Executive Board members for their support towards the Czech Karate Federation.

By joining our forces to organize this major event with over 1000 competitors, we will demonstrate that Karate will overcome the difficult times and come back stronger after the Covid era. Together we will succeed and pave the way for the future.

I wish to all the presidents of national federations and national coaches a smooth preparation of their teams and to the athletes much sporting success in the competition. To all of you dear Karate friends a pleasant stay in the Czech Republic.

I am looking forward to seeing you all in Prague.

Jiří Boček

President of the Czech Karate Federation

Prague

Prague is the capital and largest city of the Czech Republic, with population of 1.309 million inhabitants.

It is one of the most visited places in Central Europe. Prague is called „the mother of cities”.

The city has a rich architectural heritage that reflects both the uncertain currents of history in Bohemia and an urban life extending back more than 1,000 years.

The city's core, with its historic buildings, bridges, and museums, is a major centre of culture, employment and Czech economic.

Prague is the seat of government of the entire Czech Republic.





3.1 Flight



Prague is easily accessible by air via international Vaclav Havel Airport.

Vaclav Havel Airport is one of Europe's fastest growing airports in the category of 10 to 25 million passengers. Each year, this international airport checks in more than 15 million passengers. They can enjoy a choice of almost 70 airlines connecting Prague directly to more than 160 destinations all over the world throughout the year.

Prague Airport has two main passenger terminals, two general aviation terminals, as well as a cargo facility.

Most flights depart Prague Airport from the North Terminals (Terminal 1 and 2).

Buses of DPP, the Prague Public Transit Co., stop at both terminals 1 and 2 frequently.



3.2 Train & Bus

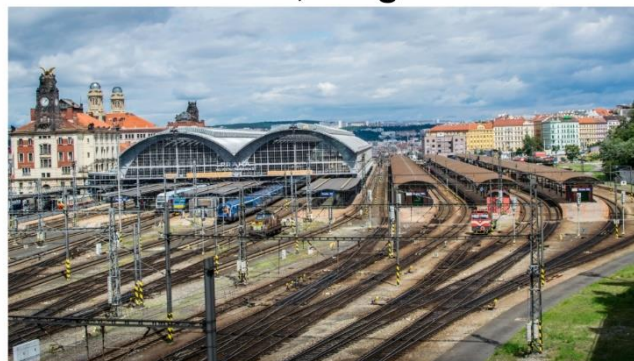
Train services

Prague Main Railway Station

Praha hlavní nádraží

Prague Main Railway Station is split over many levels and different areas. Facilities include: 24 hour luggage storage (over the counter and lockers), currency exchange offices and cashpoints (ATMs), plus a Public Transport Information Centre, bookshops, pharmacies and other medical vendors, restaurants and fast food outlets. The metro station close by is Hlavni nadrazi (line C), and there is also a tram stop nearby.

Wilsonova 300/8, Prague



Bus services

Florenc Central Bus Station

Autobusová Stanice Florenc

Praha Florenc Bus Station

is the main terminal for international coach arrivals into Prague, located just outside Prague's city centre, in an area called Florenc.

There is a metro station situated next to Florenc Bus Station, plus a tram stop.

Facilities at the bus station

include an exchange office, Internet café, fast-food, left-luggage, ATMs, parking, storage facilities, WC with showers, and a kiosk selling public transport tickets, maps and guides.

International Buses

Prague is well served by Bohemia Euroexpress International, Eurolines, GTS International, Student Agency, and Capital Express buses, all of which reach numerous EU destinations. Most international buses are equipped with cushier seats, magazines, and even entertainment and Wi-Fi internet. You can buy your tickets in advance, though most operators allow you also to purchase them directly from the driver.

Křižíkova 6, Prague



4 ACCOMMODATION & TRANSFERS



4.1 Hotel price list

Below you can find a selection of great hotels located in the heart of Prague and close to metro.

Transfers are provided only for the listed official hotels!!!

Due to the local medical regulations, all participants are obliged to stay only in the official hotels.

All hotels must be paid in advance and bookings are not confirmed before payment has been received by the hotel. Cancellations and refunds will be coordinated with the specific hotel under consideration of the individual rules for this hotel.

Individual rules for this hotel.

			BED + BREAKFAST			BED + HALFBOARD			BED + FULLBOARD		
NUMBER OF BEDS ▶			SINGLE	DOUBLE	TRIPLE	SINGLE	DOUBLE	TRIPLE	SINGLE	DOUBLE	TRIPLE
OLYMPIK CONGRESS ****	HQ HOTEL	01.03.2022 - 31.03.2022	90 €	57 €	51 €	102 €	69 €	63 €	114 €	81 €	75 €
		01.04.2022 - 15.04.2022	117 €	74 €	66 €	133 €	90 €	82 €	148 €	105 €	98 €
		16.04.2022 - 30.04.2022	135 €	86 €	77 €	153 €	104 €	95 €	171 €	122 €	113 €
OLYMPIK ARTEMIS ****	OFFICIAL HOTEL	01.03.2022 - 31.03.2022	90 €	57 €	51 €	102 €	69 €	63 €	114 €	81 €	75 €
		01.04.2022 - 15.04.2022	117 €	74 €	66 €	133 €	90 €	82 €	148 €	105 €	98 €
		16.04.2022 - 30.04.2022	135 €	86 €	77 €	153 €	104 €	95 €	171 €	122 €	113 €
OLYMPIK TRISTAR ***	OFFICIAL HOTEL	01.03.2022 - 31.03.2022	90 €	57 €	51 €	102 €	69 €	63 €	114 €	81 €	75 €
		01.04.2022 - 15.04.2022	117 €	74 €	66 €	133 €	90 €	82 €	148 €	105 €	98 €
		16.04.2022 - 30.04.2022	135 €	86 €	77 €	153 €	104 €	95 €	171 €	122 €	113 €
▲ Please book these hotels by email : RESERVATION@OLYMPIK.CZ ▲											
HOTEL DUO ****	OFFICIAL HOTEL	01.03.2022 - 31.03.2022	X	61 €	X	X	79 €	X	X	97 €	X
		01.04.2022 - 15.04.2022	X	79 €	X	X	103 €	X	X	126 €	X
		16.04.2022 - 30.04.2022	X	92 €	X	X	119 €	X	X	146 €	X
▲ Please book this hotel by email : HOM@JANHOTELS.CZ ▲											
MAMA SHELTER ****	OFFICIAL HOTEL	01.03.2022 - 31.03.2022	X	61 €	X	X	81 €	X	X	101 €	X
		01.04.2022 - 15.04.2022	X	79 €	X	X	105 €	X	X	131 €	X
		16.04.2022 - 30.04.2022	X	92 €	X	X	122 €	X	X	151 €	X
▲ Please book this hotel by email : PRAGUE@MAMASHELTER.COM ▲											
EXPO ****	OFFICIAL HOTEL	01.03.2022 - 31.03.2022	86 €	56 €	51 €	103 €	73 €	68 €	120 €	90 €	85 €
		01.04.2022 - 15.04.2022	112 €	73 €	66 €	134 €	95 €	88 €	156 €	117 €	111 €
		16.04.2022 - 30.04.2022	129 €	84 €	77 €	155 €	110 €	102 €	180 €	135 €	128 €
▲ Please book this hotel by email : OFFICE@KARATE2022.CZ ▲											

ALL PRIZES ARE PER 1 PERSON PER NIGHT IN EUR with all hotel taxes include VAT.

Prizes NOT include city tax 2 EUR per person per night and parking fees!

FROM 01.05.2022 - WE DO NOT GUARANTEE ACCOMMODATION AVAILABILITY

4.2 Official hotels

**HEADQUARTERS
OFFICIAL HOTEL****OLYMPIK
CONGRESS** ****

The 224 Olympic Congress hotel rooms have been completely renovated and their equipment complies with the four-star category. The rooms are equipped with a minibar, safe deposit, and Wi-Fi connection. Rooms included in the business category are equipped with TV. All rooms are air-conditioned.



Address: Sokolovská 138, 186 76 Praha 8-Invalidovna

The Sports hall Holešovice is 4km away.



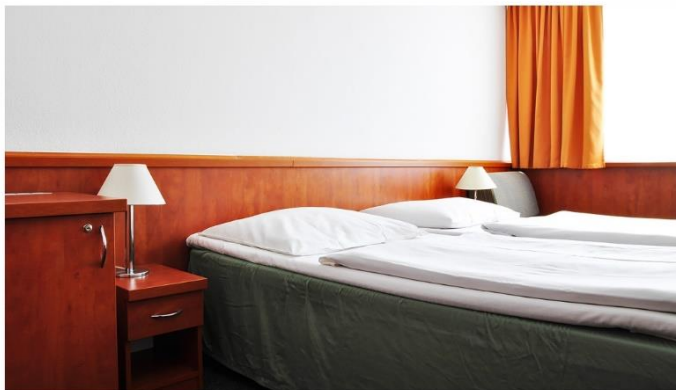
4 ACCOMMODATION & TRANSFERS



OFFICIAL HOTEL OLYMPIK TRISTAR ***



61 rooms in the Tristar Hotel have been completely renovated and their equipment complies with the three-star category. The rooms are equipped with a minibar, safe deposit, and Wi-Fi.



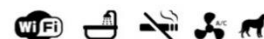
Address: U Sluncové 14, 186 76 Praha 8-Invalidovna

The Sports hall Holešovice is 4km away.





OFFICIAL HOTEL
OLYMPIK
ARTEMIS * * * *



Appointments of the 50 Artemis Hotel rooms provide higher standards of the four-star category. The rooms are equipped with a TV, minibar, safe deposit, and Wi-Fi connection. Their spacious bathrooms have a bathtub. A special feature of the Artemis Hotel is a panoramic glass elevator with a view of the golf course. Hotel rooms are air-conditioned.



Address: U Sluncové 14, 186 76 Praha 8-Invalidovna

The Sports hall Holešovice is 4km away.





HOTEL DUO * * * * OFFICIAL HOTEL

Situated only 12 min by metro from the city centre, Hotel Duo offers a wide range of high quality leisure and business services for a good value. Our modern hotel is one of the most popular hotels in Prague known for its good service, modern rooms and charming atmosphere. Choose from our 654 rooms and range of categories designed for your needs.



Address: Teplická 492, 190 00 Praha 9

The Sports hall Holešovice is 5,5km away.





OFFICIAL HOTEL MAMA SHELTER ****

Mama Shelter's hotels span seven countries and thirteen lively cities. Mama Shelter Prague is located near the main tourist attractions, a large park and the exhibition center Holešovice. Every of our 238 Mama's rooms are comfortable, stylish and playful.

Join Mama for a delicious homemade meal, sitting at one of the restaurant's large communal tables or on the rooftop, or sip on a signature cocktail at the bar listening to a live DJ set.



Address: Veletržní 1502/20, 170 00 Praha 7-Holešovice

The Sports hall Holešovice is 500m away (9 min. walk)





OFFICIAL HOTEL EXPO * * * *

Expo Hotel is Situated in Prague Exhibition Ground Area, only 12 minutes far from the heart of the city.

Our great Prague hotel gives you everything you need under one roof – affordable rooms, excellent restaurant and flexible conference facilities all come together in one location.

We are a venue with family atmosphere and professional service, opened in 1994 and successively renovated in 2015. Prague Hotel Expo accommodation features 106 bright and airy rooms with contemporary decor designed to suit a range of tastes.



Address: Za Elektrárnou 412/3, 170 00 Praha 7-Bubeneč

The Sports hall Holešovice is 20m away (1 min. walk)

ARENA



HOTEL



4.3 Transfers

TRANSFERS ARE PROVIDED FROM

Prague Main Railway Station (Praha Hlavní Nádraží)
Florenc Central Bus Station (Florenc)
Václav Havel Airport Prague

ALL PRICES ARE VALID FROM 01.03.2022 TO 31.03.2022

01.04. - 15.04.2022 Original price +30%

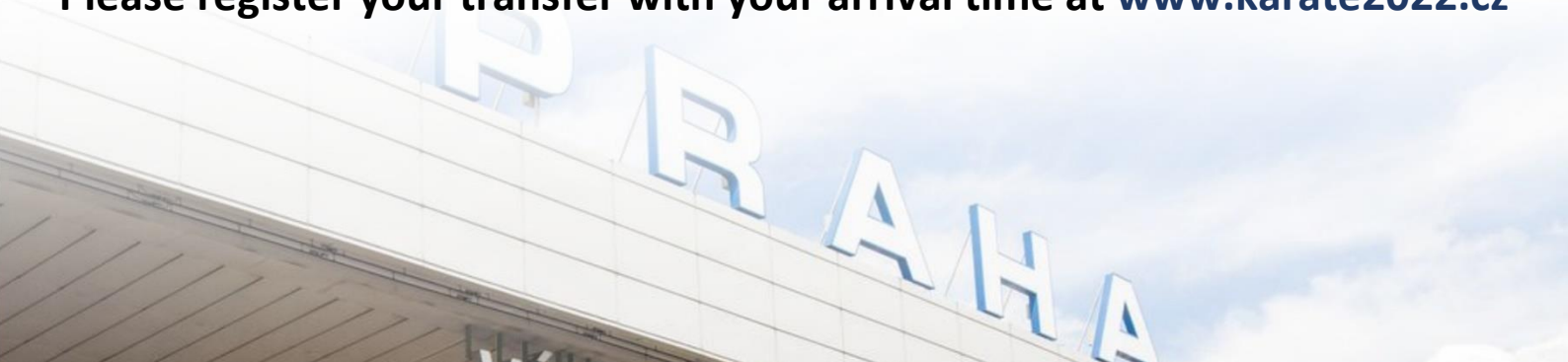
16.04. - 30.04.2022 Original price +50%

30.04.2022 END OF REGISTRATION

OLYMPIK HOTELS
ARTEMIS CONGRESS TRISTAR
HOTEL DUO
MAMA SHELTER
EXPO

Car	max 3 persons	19 EUR/person	Minimum payment: 57EUR
Microbus	max 13 persons	13 EUR/person	Minimum payment: 85EUR
Minibus	max 20 persons	11 EUR/person	Minimum payment: 110EUR
Bus	max 50 persons	9 EUR/person	Minimum payment: 225EUR

Please register your transfer with your arrival time at www.karate2022.cz





ARENA TRANSFER

HOTEL ↔ SPORTS HALL HOLEŠOVICE

No transfer between hotel and Sports hall Holešovice provided.

MAMA SHELTER ↔ SPORTS HALL HOLEŠOVICE

Distance: 0,9km - *walking distance*

EXPO ↔ SPORTS HALL HOLEŠOVICE

Distance: 0,2km - *walking distance*

OLYMPIK HOTELS ARTEMIS CONGRESS TRISTAR HOTEL DUO

Morning departure to the arena is at 7:00

There will be one bus connecting

HOTELS and ARENA every 60min.

Evening departure back to the hotel is at 21:00

OLYMPIK HOTELS ARTEMIS CONGRESS TRISTAR HOTEL DUO

OLYMPIK & DUO



Sports hall Holešovice

Sports hall Holešovice



OLYMPIK & DUO

07:00 14:00

08:00 15:00

09:00 16:00

10:00 17:00

11:00 18:00

12:00 19:00

13:00 20:00

07:30 14:30

08:30 15:30

09:30 16:30

10:30 17:30

11:30 18:30

12:30 19:30

13:30 20:30

21:00

5.1 COVID-19

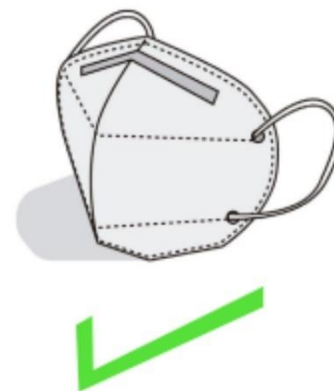
DUE TO THE CURRENT EMERGENCY HEALTH SITUATION THIS EVENT WILL BE HELD UNDER THE WKF COVID-19 PROTOCOL

**Key Elements****Karate in Times of Coronavirus**

CERTIFIED FACE MASKS

The use of Certified Masks of FFP2 type or equivalents (N95 (United States), KN95 (China), P2 (Australia/New Zealand), Korea 1st class (Korea), DS2 (Japan)) within the specifications for use is always mandatory in the venue, with the exceptions for athletes that are detailed herein.

Once an athlete enters the venue grounds the athletes must always wear Certified Masks except while warming up, training, and competing in the designated areas/tatamis, respectively. This also means the Certified Mask shall be worn in transit between the Warmup and Competition Areas.



NOT ALLOWED MASKS



Surgical



Industrial



With Valve



Cloth

Covid measures may change and they will be updated due to state of Czech Republic measures during the event. Further information will be provided in bulletin 2 or on www.karate2022.cz

MANDATORY DOCUMENTS TO BE SUBMITTED AT THE OFFICIAL REGISTRATION



On registration day all participants must submit the 2 following documents (1, 2)

Printed:

1) Proof of COVID Status (Only 1 of the following per person.)

- a. A Negative COVID-19 RT-PCR Test
 - Result issued at most 72 hours before the onsite registration in English. No antigen tests will be accepted.
- b. A COVID-19 Vaccination Certificate*
 - showing that they were fully vaccinated at least weeks before the day of registration.
- c. A COVID-19 Recover Official Certificate*
 - They must have tested positive at least 2 weeks and at most 6 months (180 days) before registration day.

*Specification in WKf Covid Protocol

2) Waiver of Liability Form (Only 1 of the following per person.)

- a. NF/Team Representative & Team List
- b. Individual +18 years old
- c. Individual - 18 years old (Parental Consent required)

The NF/Team Representative takes full responsibility for the validity of all signatures and information provided.

Covid Manager:

Michael Wenner

Tel.: (+34) 91 535-9632

E-mail: mwenner@wkf.net

5.2 COVID-19 Local Restrictions

For information about the current situation of COVID-19 in the country, please follow the website www.karate2022.cz

Covid measures may change and they will be updated due to state of Czech Republic measures during the event. Further information will be provided in bulletin 2 or on www.karate2022.cz



6.1 Online registration for all athletes and coaches

Online registration can be made from the 17th February 2022 until 3rd June 2022 under the following link:

ONLINE REGISTRATION

6.2 Press

Press accreditation can only be given to professional journalists working for a media and having proof of their credentials.

Media professionals can register to request press accreditations until 3rd June 2022 through the online registration form which can be found here:

ONLINE REGISTRATION

Journalists will be required to follow the WKF COVID-19 Protocol, including presenting a negative PCR Test or Certificate of Vaccination and wearing a face mask at all times. Learn more about WKF COVID-19 Protocol here: www.bit.ly/WKF_COVID19_protocol

Accredited photographers will have access to their allocated seats only upon presenting the accreditation cards given to them during registration. Video recording will not be allowed.

A mixed zone will be available for accredited journalists and photographers.

Should you need more information about press or media related issues, please directly contact the European Karate Federation's office: press@wkf.net

6.3 Onsite Registration & Accreditations

2 representatives of the NF/ Team are requested to organize the required Covid Documents printed (See WKF Covid Protocol) for each individual inside their passport without any plastic coverings prior to entering the onsite registration. Along with the required Covid documents, accreditations will be checked.

Accreditations for Kumite athletes will be sent directly to the Weigh-in. **Accreditations for Kata athletes, coaches, doctors, therapist** will be given at the last station of the onsite registration.

Accreditations for officials, referees and coaches for the coaching courses will be sent to the antigen testing station where they will have to perform their antigen tests and after receiving a negative result will receive their accreditation.

After passing the document and accreditation check, the representatives will continue to Sportdata to confirm their entries.

Registration will be arranged in HQ Hotel (OLYMPIK HOTEL CONGRESS) on Thursday, 16.6.2022 from 09:00 to 15:00 hours in hall TRIUMF (hall inside of HQ Hotel)

Each participating country is requested to provide 2 national flags and a CD with the national Anthem.





6.4 Referee Registration

Referee Course

The Referee Course registration will be open on 17th February 2022.

The Referee Course registration will close on 16th May 2022.

All registrations must be made **online**, within the deadlines above mentioned, through the following Sportdata links:

KATA REGISTRATION

KUMITE REGISTRATION

Should you have any technical difficulties when registering, please contact support@sportsid.org

Referees attending and officiating at the EKF Championships 2022

The registration of qualified Referees for officiating in European Championships opens on 17th February 2022.

The registration of qualified Referees for officiating in European Championships closes on 16th May 2022.

All registrations must be made **online**, within the deadlines above mentioned, through the following Sportdata link:

ONLINE REGISTRATION

Should you have any technical difficulties when registering, please contact support@sportsid.org



6.5 Referee Course Schedule

DAY	TIME		ROOM
TUESDAY 14 June 2022	08:00- 8:45	Referee Commission Meeting	HQ Hotel: CONGRESS Halls: TRIBUN + ODYSEUS
	09:00-12:00	Referee Course & Registration for candidates	HQ Hotel: CONGRESS Halls: ARTEMIS 1, 2, 3, 4
	12:00-13:00	Lunch	
	13:00-15:00	Kumite theory / Kumite theory examination	
	15:00-17:00	Kata theory / Kata theory examination	
WEDNESDAY 15 June 2022	09:00-12:00	Kumite - Practical examination Group 1	HQ Hotel: CONGRESS Halls: ARTEMIS 1, 2, 3, 4
	12:00-13:00	Lunch	
	13:00-16:00	Kumite - Practical examination Group 2	
	16:30-19:30	Kumite - Practical examination Group 3	
THURSDAY 16 June 2022	08:30-12:00	Kata – Instruction and Practical examination	HQ Hotel: CONGRESS Halls: ARTEMIS 1, 2, 3, 4
	12:00-13:00	Lunch	
	13:00-18:00	RC Administration	
	16:30-17:30	License renewal written test	
	18:00-19:00	Referee Course examination Results	
	19:00-20:00	Referees Briefing	
	20:00-20:30	Tatami Manager & Appeals Jury meeting	



6.6 Event Schedule

THURSDAY 16 June 2022	09:00-15:00	Registration for Delegations	HQ Hotel: CONGRESS
	16:30-18:00	Open Draw for Coaches (On-line)	Hall: TRIUMF
	12:00-13:30	Medical & Anti Doping Commission Meeting	HQ Hotel: CONGRESS
	14:00-16:30	Technical Commission Meeting	Halls: TRIBUN + ODYSEUS
FRIDAY 17 June 2022	09:00-11:00	Executive Committee Meeting	HQ Hotel: CONGRESS
			Halls: TRIBUN + ODYSEUS

* The onsite registration will be completed as follows, CHECKING OF THE COVID DOCUMENTATION [Section 5.1] FOR ALL DELEGATION MEMBERS

ATHLETES*

CHECKING OF COVID DOCUMENTATIONS [Section 5.1]
ONSITE REGISTRATION AND ACCREDITATIONS' DELIVERY

WEIGH-IN

The weigh-in of all athletes will **ONLY** take place during registration day on Thursday 16.06.2022 in HQ Hotel CONGRESS - Hall TRIUMF.

Prior to the weigh-in the athletes and coaches must pass an antigen test.



OFFICIATING COACHES, DOCTORS, PHYSIOTHERAPIST*

CHECKING OF COVID DOCUMENTATIONS ONSITE [Section 5.1]

REGISTRATION AND ACCREDITATIONS' DELIVERY

*The ANTIGEN TESTING for athletes, officiating coaches, doctors, physiotherapist will take place the day of competition.

OFFICIALS AND REFEREES

CHECKING OF COVID DOCUMENTATIONS ONSITE [Section 5.1]

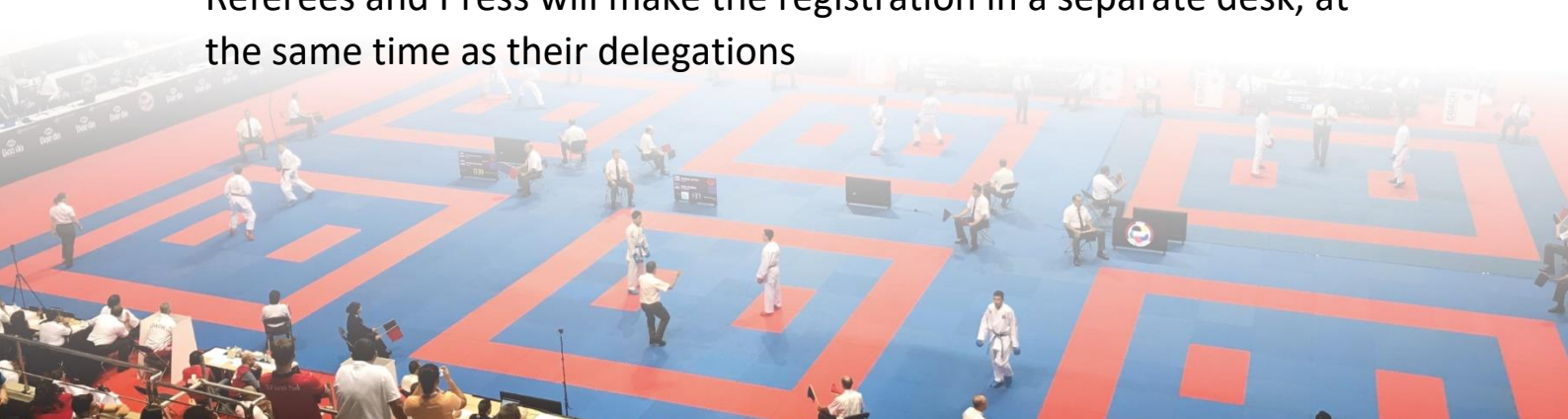
ANTIGEN TEST

Upon reception a negative result of the antigen test, DELIVERY OF ACCREDITATIONS.

Timeslots will be required by every NF according with their preferences, delegations that do not have a reserved time for registration, will be attended when the registration ends after 2:00 p.m.

In the registration room only will be available two people in charge per country for to make the registration of each delegation, these persons will show all the COVID documents and the original passport of all the members of their delegation, it is mandatory to pass during the registration the antigen-test for every accredited person except, Athletes, Coaches, Doctors and Physios, remember to the weigh-in will be during the competition days.

Referees and Press will make the registration in a separate desk, at the same time as their delegations



7.1 Categories

Individual Categories							
U21 (age 18/19/20)				Junior (age 16/17)			
Individual Kata		Individual Kumite		Individual Kata		Individual Kumite	
Male	Female	Male	Female	Male	Female	Male	Female
		-60 kg	-50 kg			-55 kg	-48 kg
		-67 kg	-55 kg			-61 kg	-53 kg
		-75 kg	-61 kg			-68 kg	-59 kg
		-84 kg	-68 kg			-76 kg	+59 kg
		+84 kg	+68 kg			+76 kg	
Cadet (age 14/15)							
Individual Kata		Individual Kumite					
Male	Female	Male	Female				
		-52 kg	-47 kg				
		-57 kg	-54 kg				
		-63 kg	+54 kg				
		-70 kg					
		+70 kg					
Team Categories							
		Cadet and Junior Team Kata (age 14/17)					
		Male		Female			

7.2 Age

IMPORTANT NOTE:

The age limit of competitors for the corresponding category will be the first day of the entire event. This means competitors must have the eligible age by June 17th 2022.



7.3 Competition Programme

The weigh-in of all athletes will ONLY take place during registration day on Thursday 16.06.2022 in HQ Hotel CONGRESS - Hall TRIUMF. Prior to the weigh-in the athletes and coaches must pass an antigen test. The definite competition schedule will be fixed after closing the online registration in order to adequate it to the final number of athletes, as well as Covid-19 countermeasures.

Friday June 17th 2022

9:00 – 13:30	Eliminations without Bronze Medal fights
	Individual Kata Cadets (Male & Female)
	Individual Kata Juniors (Male & Female)
	Individual Kata U21 (Male & Female)
13:45 – 17:45	Eliminations and Repechage (without Bronze Medal matches)
	All Cadet Kumite categories (Male & Female)
18:30 – 19:00	Opening Ceremony
19:15 – 20:30	Eliminations without Bronze Medal fights
	All Kata Team categories



Saturday June 18th 2022

9:00 – 14:30	Eliminations and Repechage (without Bronze Medal matches)	
	All Junior Kumite categories	(Male & Female)
14:30 – 20:30	Eliminations and Repechage (without Bronze Medal matches)	
	All U21 Kumite categories	(Male & female)

Sunday June 19th 2022

	Gold and Bronze Medal matches and Medal ceremony of all categories	
09:00 – 20:00	All categories	





ALL “WKF Approved” KARATE-GIS ARE ALLOWED TO PARTICIPATE IN THIS COMPETITION.

(INCLUDING KARATEGIS WITH THE BRAND EMBROIDERED IN RED OR BLUE ON THE SHOULDERS)

Click on the picture to see all the “WKF approved” Karate-Gis.





SPORT PROTECTIONS “WKF Approved”



*Click on the logos

DISTRIBUTORS ASSISTANCE “WKF Approved”

Click on the image to visit the distributors by countries



TATAMIS “WKF Approved”



*Click on the logos



Venue location: Za Elektrárnou 419/1, 170 00 Praha 7-Bubeneč

Opened in 1962.

Former Tipsport arena, now called the Sports hall Holešovice.

During its existence, the arena has hosted many important sporting events and it's here, where the 28th edition of European Karate Championships was held in 1993. It is the second largest multipurpose indoor arena in the Czech Republic, a place where dozens of sporting, cultural and social events take place each year, and which can accommodate between 12 to 15 thousand visitors based on event type. Thanks to its large size it also offers great opportunities and support for various sporting disciplines.

Almost all indoor sport events may be organized here such as circus performances, motocross disciplines, fighting or combat sports, power sports and bodybuilding.

The hall is equipped with a boxing ring, punch bags and tatami mats.

It is also the home arena for HC Sparta Prague and HC Lev Prague, and also for the most successful basketball club in Czech history OEZ Basketball Nymburk.





10 TICKETS

Experience the atmosphere of the arena!

Watch the best European karatekas live at Sports hall Holešovice!

Ticket sale starts from 01.03.2022 through the website www.karate2022.cz

Daily ticket 15 Euro person / day

Season ticket 30 Euro person / 3 days

Discount for participants

Daily ticket 10 Euro person / day

Season ticket 20 Euro person / 3 days

There is a possibility that due to the COVID-19 measures, athletes will be prohibited from entering free part of the auditorium! If you want to ensure access to the event on days you will not perform, we recommend purchasing a ticket. For up to date information about COVID-19 situation and measures for the event, please follow www.karate2022.cz

11 TRAINING FACILITIES

We are currently finishing the preparation of training facilities for you.

More information will be added in **Bulletin 2** and at www.karate2022.cz





12.1 Entry Requirements

From December 21, 2007 Czech Republic is a member of the Schengen Area, and applies the Schengen legislation in full.

Visas

The rules for travelling or working in European countries changed on 1 January 2021. You can travel to countries in the Schengen area for up to 90 days in any 180-day period without a visa. This applies if you travel as a tourist, to visit family or friends, to attend business meetings, cultural or sports events, or for short-term studies or training. Visits to Schengen countries within the previous 180 days before you travel count towards your 90 days! To stay longer, to work or study, for business or for other reasons, you will need to meet the Czech government's entry requirements. (Check with the Embassy of the Czech Republic what type of visa and/or work permit you may need. If you stay in the Czech Republic with a visa or permit, this does not count towards your 90-day visa-free limit)

At Czech border control

You may need to use separate lanes from EU, EEA and Swiss citizens when queueing. Your passport may be stamped on entry and exit.

There are separate requirements for those who are resident in the Czech Republic.

If you are resident in the Czech Republic, you should carry proof of residence as well as your valid passport when you travel.

Passport validity

Check your passport is valid for travel before you book your trip, and renew your passport if you do not have enough time left on it. You must have at least 6 months left on an adult or child passport to travel to most countries in Europe. If you renewed your current passport before the previous one expired, extra months may have been added to its expiry date. Any extra months on your passport over 10 years may not count towards the 6 months needed.

UK Emergency Travel Documents

UK Emergency Travel Documents (ETDs) are accepted for entry, airside transit and exit from the Czech Republic.

12.2 Opening hours of shops

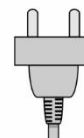
Most small shops are open from 08:00 to 20:00.

This time may change on weekends.

Large shops, pharmacies, restaurants and shopping malls are usually open all week from 7:00 to 22:00 or even 24/7.

12.3 Electricity

Electricity in Czech Republic is 230V, with a frequency of 50hz.



12.4 Language

The official language of Czech Republic is czech. Czech people generally do not speak any other languages, young people mostly speak English. Organizers will also speak English.

12.5 Time

Czech Republic is in the Central European Time Zone (CET, GMT +1).

12.6 Weather

Summer in Czech Republic is pretty hot.

Temperatures reaching from 10°C in the morning up to over 25°C during the day.

The long-term temperature normal is around 20°C.



12 ADDITIONAL INFORMATION



12.7 Currency

The **Czech Koruna** "Czech Crown" (**CZK**) is the currency of Czech Republic.

In most shops, restaurants, bars and pharmacies you can use credit cards as Master card or VISA.

A lot of shops also accept euros.

But we recommend you to have some Czech cash while exploring the city.

EXCHANGE RATES

1 EUR Euro	around 23	CZK Czech koruna
1 CHF Swiss franc	around 22,5	CZK Czech koruna
1 USD US dollar	around 20,5	CZK Czech koruna
1 GBP British pound	around 29	CZK Czech koruna

100 **CZK**



200 **CZK**



500 **CZK**



1000 **CZK**



2000 **CZK**



5000 **CZK**



1 **CZK**



2 **CZK**



5 **CZK**



10 **CZK**



20 **CZK**



50 **CZK**



12.8 Health & Services

There will be professional medical experts onsite, several ambulances and emergency vehicles. Please contact the organizers when you need help.

12.9 Insurance

In compliance with EKF Rules, it is obligatory for all the participants and members of the participating delegations have their own medical and personal trip insurance. The Czech Karate Federation and European Karate Federation as well as the Organizing Committee assume no liability or responsibility for the lack of insurance from participants and members of the delegations. The head of the delegations have to sign the enclosed terms of responsibility and return it by **30.04.2022 the latest**.

12.10 Transportation

The public transport system of Prague is wide, modern and reliable. You can reach anything by bus, tram, metro.

Tickets are time limited and can be by buy:

- **In information centers and selling points** at most of the metro stations.
DO NOT FORGET TO VALIDATE THE TICKET WITH STAMP IN THE YELLOW VALIDATION BOX
- **In yellow ticket vending machines** at metro stations and some surface transit stops.
The vending machines accept only coins, not banknotes.
Busy places are equipped with machines that accept cards as well.
DO NOT FORGET TO VALIDATE THE TICKET WITH STAMP IN THE YELLOW VALIDATION BOX
- **In newspaper shops** in the whole area of Prague.
DO NOT FORGET TO VALIDATE THE TICKET WITH STAMP IN THE YELLOW VALIDATION BOX
- **In the mobile app - PID Lítačka RECOMMENDED**
Before you use the ticket, you need to activate it in the application!
It can be done automatically after the purchase or manually later.
The validity of the ticket starts two minutes after the validation, so remember to activate the ticket in advance. (paid by credit/debit card, Masterpass or Apple Pay)
- **Inside every tram**, in the middle of every tram vehicle.
Passenger is obliged to buy the ticket immediately after getting on the tram and the ticket is valid immediately. (only by contactless credit/debit card)



Validation box

12.11 Drinking water

Tap water in Czech Republic is excellent quality. You are free to drink from the water taps in hotels, restaurants etc.

12.12 Important Phone Numbers

General emergency: 112

Police: 158

Firefighters: 150

Ambulance: 155

Lunch will be arranged by Czech Karate Federation at the
Sports hall Holešovice

CATERING PRICE LIST	
01.03.2022 - 31.03.2022	15 €
01.04.2022 - 15.04.2022	20 €
16.04.2022 - 30.04.2022	23 €

You can book catering through the form at
www.karate2022.cz

**Catering may be canceled! Depending on the current
COVID-19 situation in the country.**

ALL PRICES ARE VALID FROM 01.03.2022 TO 31.03.2022

01.04. - 15.04.2022 Original price +30%

16.04. - 30.04.2022 Original price +50%

30.04.2022 END OF REGISTRATION

Your catering booking can be canceled until 15.5.2022
thru office@karate2022.cz . Please state your Team name
and contact info you provided in booking formular on
www.karate2022.cz





TERMS OF RESPONSIBILITY

To be filled in, signed by the head of delegation and **sent back 30/04/2022** (by email to office@karate2022.cz) **the latest**. Delegations lacking insurance policies could acquire it at the Registration Desk upon request.

I, the undersigned, as the Head of Delegation of my country, duly enrolled to participate in the 49th EKF Junior, Cadet and 14th U21 Championships, which will be held in Prague, Czech Republic from June 17th to June 19th, 2022, with full knowledge of the Statutes, the Rules and the Norms of the EUROPEAN KARATE FEDERATION, pledge myself to faithfully accomplish the regulations of this before mentioned entity.

I take any and all administrative, civil, and criminal responsibilities for whatever happens to our athletes, coaches and other members of our delegation participating in the championship, before, during, and after the competition, such as physical injuries, personal expenses, or monetary debts and casual material damages to the hotels, the venue, means of transportation, etc.

Furthermore, I exempt from any legal, civil or criminal responsibilities the organizers of the Championship, the EKF and the Czech Karate Federation, its directors, as well as any person, company, or entity related to the event (sponsors, public and private entities). I authorize the organizers of the event to use images, photos and the names of our competitors and other members of our delegation (since it is considered necessary) for the sport activities and publications of karate, related to the event, without any monetary compensation.

Country/ Nation:

Surname, First Name:

Passport number & expiration date:

Credit card number & expiration date:

Federation position:

Address:

Phone:

Email:

Date & place:

Signature :



15.1 Czech Karate Federation

Address: Nad Kapličkou 3378/17, 100 00, Praha 10

Tel: +420 603 480 925

E-mail: office@karate2022.cz

Website: www.czechkarate.cz



For all inquiries, hotel, transportation and training bookings, as well as visa requests and general questions, please contact the OC:

Competition General Issues & Visa	office@karate2022.cz
Training Requests	office@karate2022.cz
Presale Tickets	office@karate2022.cz
Hotel Accommodation	office@karate2022.cz
Transport requests	office@karate2022.cz
Referee course, judges, officials	office@karate2022.cz
VIP requests	office@karate2022.cz

15.2 Safe Karate

EKF events must be safe for all athletes and participants and entirely free from any form of non-accidental violence, namely, harassment and abuse. Any such behaviour will not be tolerated.

If you or someone you know has been the victim of abuse or harassment in Karate, get help and report it: safekarate@ekf.com.es



PARTNERS



NÁRODNÍ
SPORTOVNÍ
AGENTURA



SPONSORS



ATT INVESTMENTS



MEDIAL PARTNERS

TV



Radio



Magazines



Internet



Advertising

